

Product Data Sheet

Product name – “Bumpetz ” (shank-less tactiles)

Product Description

“Bumpetz” shank-less corduroy trims are a first to market, fully endorsed, health and safety tread tactile alert system.

Developed in conjunction with one of the world’s leading technology companies, “Bumpeez” are the world’s first patented anti-slip tactile system that requires no drilling for installation.

TASS products are incredibly versatile and can provide an instant DDA and Equality Act 2010 compliant tactile surface to any platform edge, stairway or ramp due to their unique installation methods

Our products are fully approved by London Underground for use in under-ground and over-ground stations. They are also approved under the Section 12, LU 1-085 Fire Safety standard. They are endorsed and used by Network Rail, Transport for London and are utilised across many industries including many council ‘streets for all’ schemes.

The anti-slip inserts are available in a variety of colour options as well as luminous for safety areas.. Our luminous products meet the requirements of DIN 67510 part 4 with respect to the luminescence of 10 – 60 minutes.

Our ‘TASS’ range of products are fully compliant with BS 8300: 2009 and amendment A1: 2010

Product Features

No Drilling Required

Developed in conjunction with one of the world’s leading blue-chip technology companies, we can now offer our clients the only tactile system on the market that can be adhered directly to the substrate with an adhesive weld system.

Adherence to virtually any surface

Our products can be adhered to a variety of substrates, which include, natural stones, porcelains, ceramics, safety vinyl, wood, glass, concrete, metals, to list but a few.

Product Features

Anti-slip properties

All of our anti-slip resins come with a host of data sheets, test results, safety sheets and industry endorsements.

Colour co-ordination

Our anti-slip products are available in a wide range of colours including luminous. This enables our products to be applied into areas that require exact colour specifications such as red tactiles for controlled crossing and buff tactiles for drop kerbs etc.

Speed of installation

Time is money !. We understand the problems caused through project timescales as well as the expense of platform down times and traffic management. Our systems are designed to be installed quickly, quietly and most of all efficiently, with little or no project disruption.

Environmentally friendly

Our “Bumpeez” system uses almost two thirds less raw materials than the traditional drilled system and also requires no power tools for installation. The energy savings in machining time alone is far reaching, vastly reducing the carbon footprint from a manufacturing and installation point of view.

Heath & Safety

Our luminous range of tactiles, enable the finished installation area to be used in cases of power cuts and emergency without any external power source.

Heat dissipation

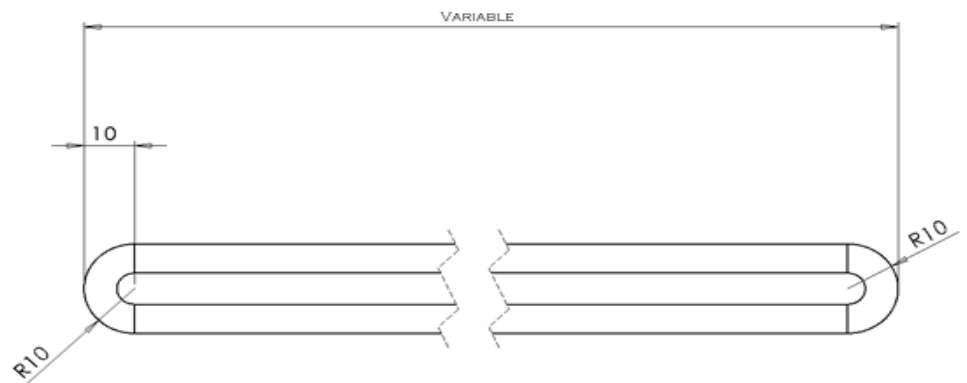
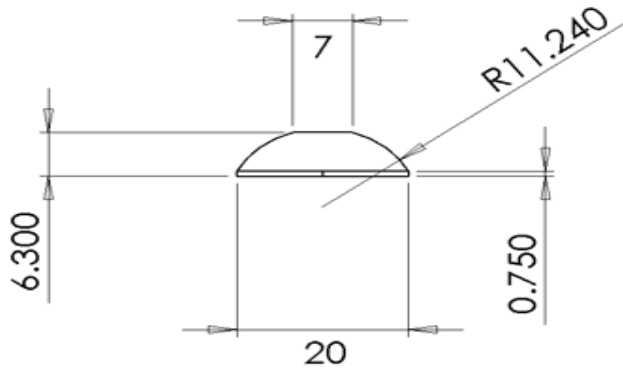
A recent report by the RNIB advised that standard stainless steel tactiles were causing distress to a number of guide-dogs due to heat conductivity when in direct sunlight. Our patented systems do not have this heat dissipation problem.

Quality control





Working to an ISO standard, all our products are continually monitored for quality.

Product Specs

Material - Stainless Steel Grade 316



“Bumpeez” anti-slip inserts stocked colour range

Anthracite	Grey	Red Brown	Beige	Yellow	White	Neon
						

“Bumpetz” in a working environment.

