

Product Data Sheet

Product name – Stainless Steel (Grade 316) Bumpeez™ Tactile Range
Available in both drilled and adhered versions

Product Description

Bumpeez™ shank-less tactiles are a first to market, fully endorsed, health and safety tactile alert system.

Developed in conjunction with one of the world's leading technology companies, Bumpeez™ are the world's first patented anti-slip tactile system that requires no drilling for installation.

TASS products are incredibly versatile and can provide an instant DDA and Equality Act 2010 compliant tactile surface to any platform edge, stairway or ramp due to their unique installation methods

Our products are fully approved by London Underground for use in under-ground and over-ground stations. They are also approved under the Section 12, LU 1-085 Fire Safety standard. They are endorsed and used by Network Rail, Transport for London and are utilised across many industries including many council 'streets for all' schemes.

The anti-slip inserts are available in a variety of colour options as well as luminous for safety areas. Our luminous products meet the requirements of DIN 67510 part 4 with respect to the luminescence of 10 – 60 minutes.

Our 'TASS' range of products are fully compliant with BS 8300: 2009 and amendment A1: 2010

Product Features

No Drilling Required *when using 3M adhered version

Developed in conjunction with one of the world's leading blue-chip technology companies, we can now offer our clients the only tactile system on the market that can be adhered directly to the substrate with an adhesive weld system.

Adherence to virtually any surface *when using 3M adhered version

Our products can be adhered to a variety of substrates, which include, natural stones, porcelains, ceramics, safety vinyl, wood, glass, concrete, metals, to list but a few.

Product Features

Anti-slip properties

All of our anti-slip resins come with a host of data sheets, test results, safety sheets and industry endorsements.

Colour co-ordination

Our anti-slip products are available in a wide range of colours including luminous. This enables our products to be applied into areas that require exact colour specifications such as red tactiles for controlled crossing and buff tactiles for drop kerbs etc.

Speed of installation

Time is money !. We understand the problems caused through project timescales as well as the expense of platform down times and traffic management. Our systems are designed to be installed quickly, quietly and most of all efficiently, with little or no project disruption.

Environmentally friendly

Our Bumpeez™ system uses almost two thirds less raw materials than the traditional drilled system and also requires no power tools for installation. The energy savings in machining time alone is far reaching, vastly reducing the carbon footprint from a manufacturing and installation point of view.

Heath & Safety

Our luminous range of tactiles, enable the finished installation area to be used in cases of power cuts and emergency without any external power source.

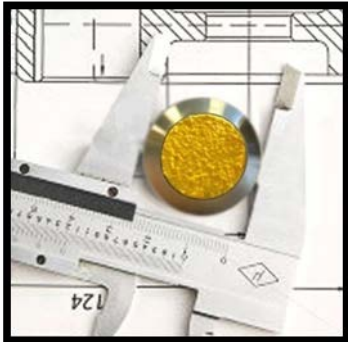
Heat dissipation

A recent report by the RNIB advised that standard stainless steel tactiles were causing distress to a number of guide-dogs due to heat conductivity when in direct sunlight. Our patented systems do not have this heat dissipation problem.

Quality control

Working to an ISO standard, all our products are continually monitored for quality. All raw materials are fully traceable to UK sources.

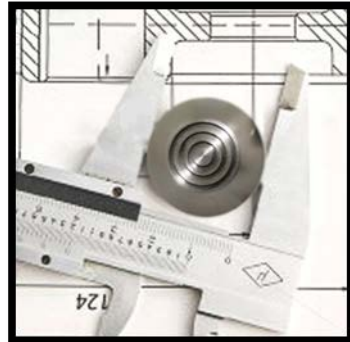
Stainless Steel (Grade 316) Bumpez™ Tactile Range



BUMPEEZ™ RESIN TACTILE

25mm diameter (also in 35mm)
complete with anti-slip resin insert
3M Adhered

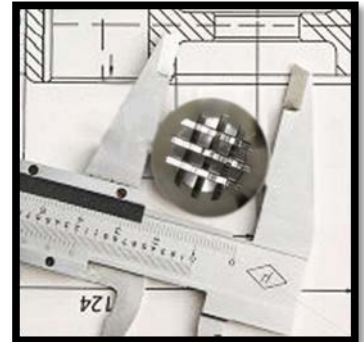
Order: SS3M-BUMPEEZ-25



BUMPEEZ™ CIRCLE TACTILE

Circular Groove Indentation
25mm diameter (also in 35mm)
3M Adhered

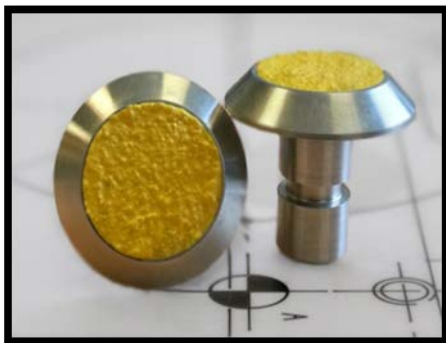
Order : SS3M-CIRCLE-25



BUMPEEZ™ HATCH TACTILE

Cross Hatch Indentation
25mm diameter (also in 35mm)
3M Adhered

Order code : SS3M-CROSS-25



BUMPEEZ™ RESIN TACTILE

25mm diameter (also in 35mm)
complete with anti-slip resin insert
Drill fix Shanked version

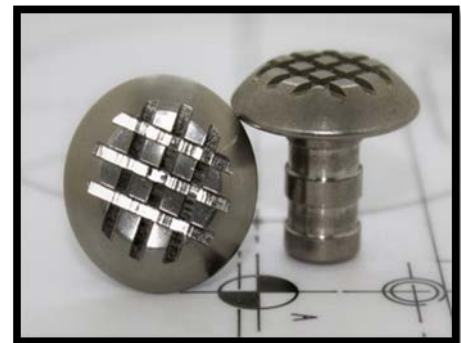
Order: SSSH-BUMPEEZ-25



BUMPEEZ™ CIRCLE TACTILE

Circular Groove Indentation
25mm diameter (also in 35mm)
Drill fix Shanked version

Order : SSSH-CIRCLE-25




BUMPEEZ™ HATCH TACTILE

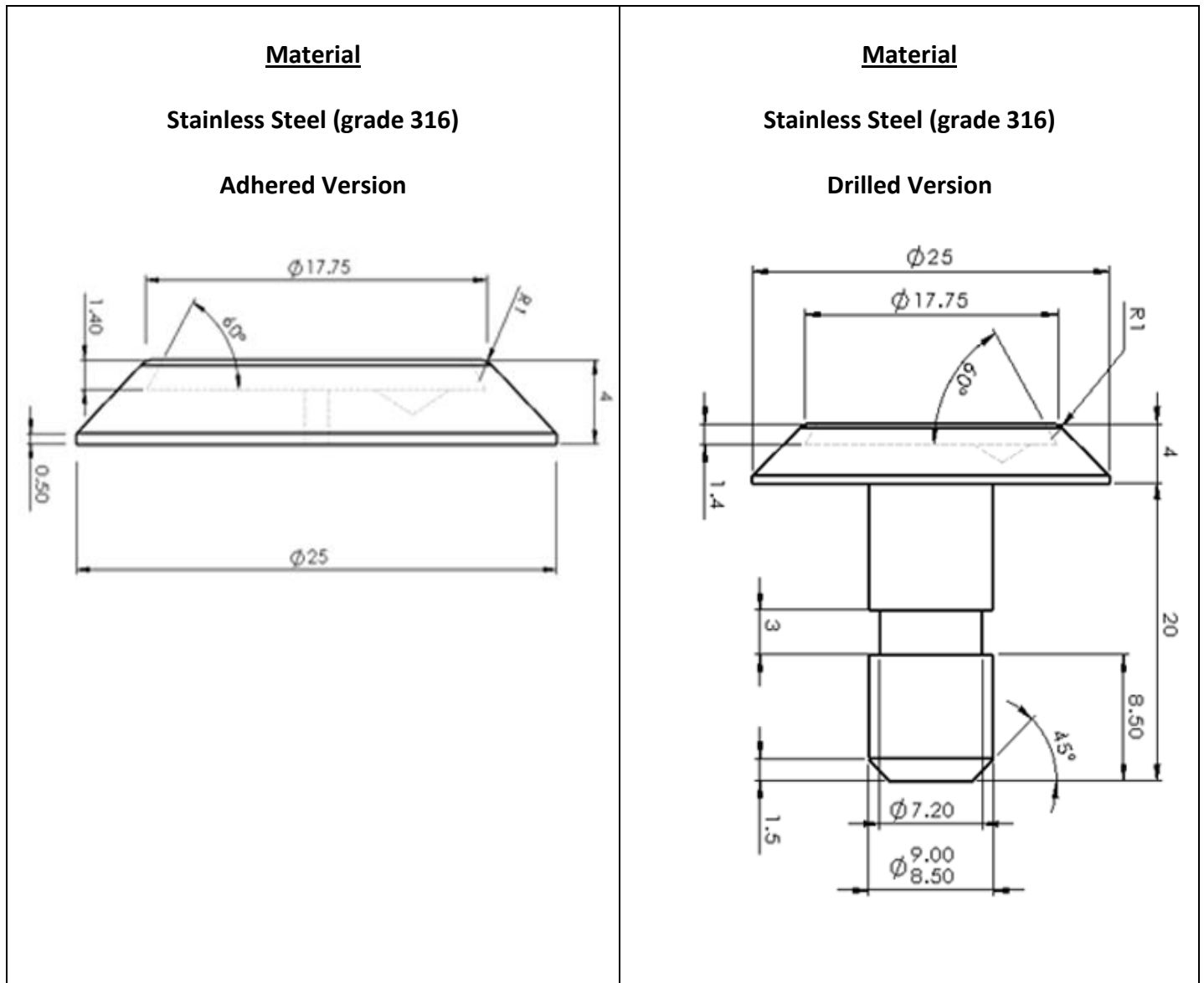
Cross Hatch Indentation
25mm diameter (also in 35mm)
Drill fix Shanked version

Order code : SSSH-CROSS-25

Bumpez™ anti-slip resin stocked colour range

Anthracite	Grey	Red Brown	Beige	Yellow	White	Neon
						

Below show the patented design specification for studs that encompass our TASS R11 anti-slip resins.



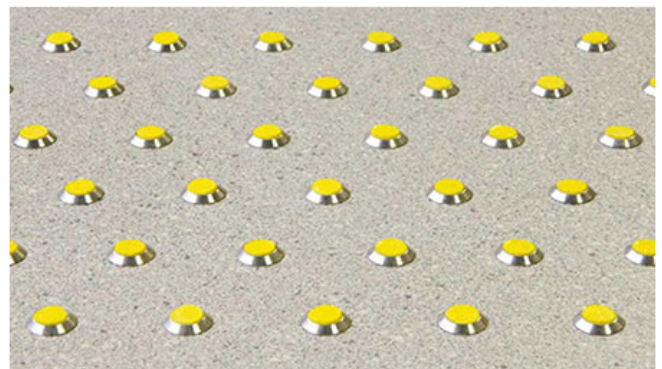
Please note – also available in stainless steel grade 303/304 if required.

Instructions for Use

Please see additional “Application technique” data sheet

Bumpeez™ in working environments

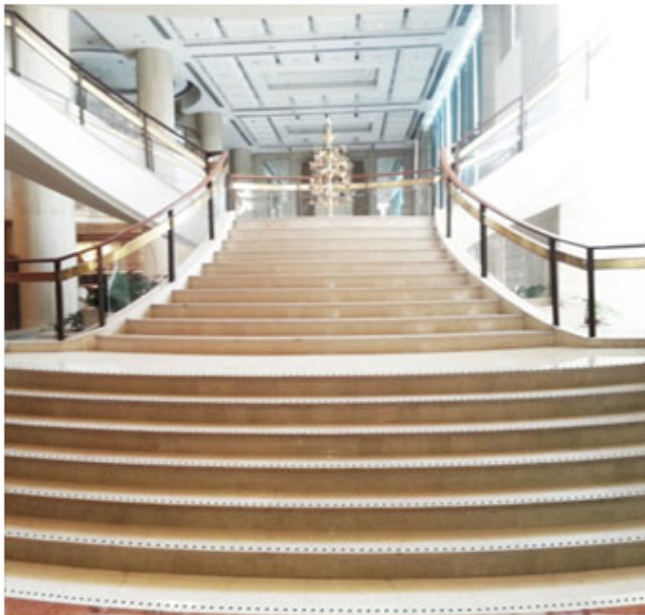
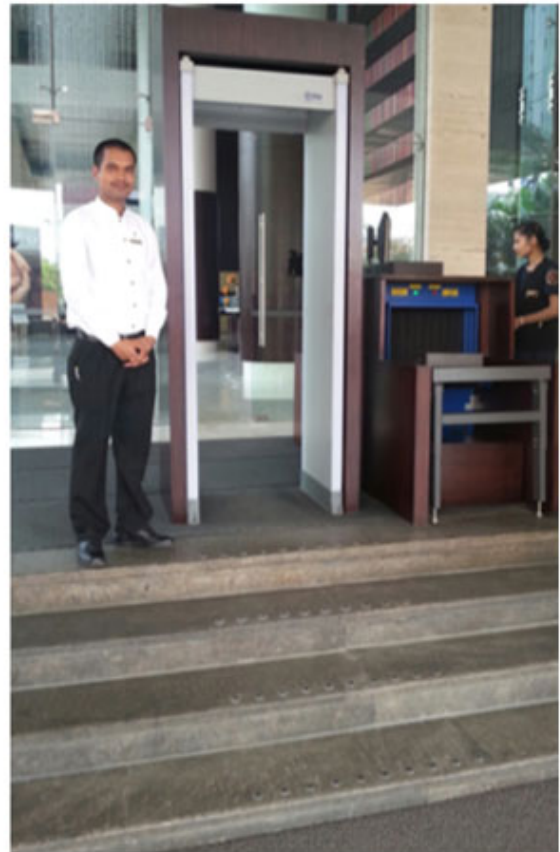
Rail – Endorsed for use by London Underground and Network Rail



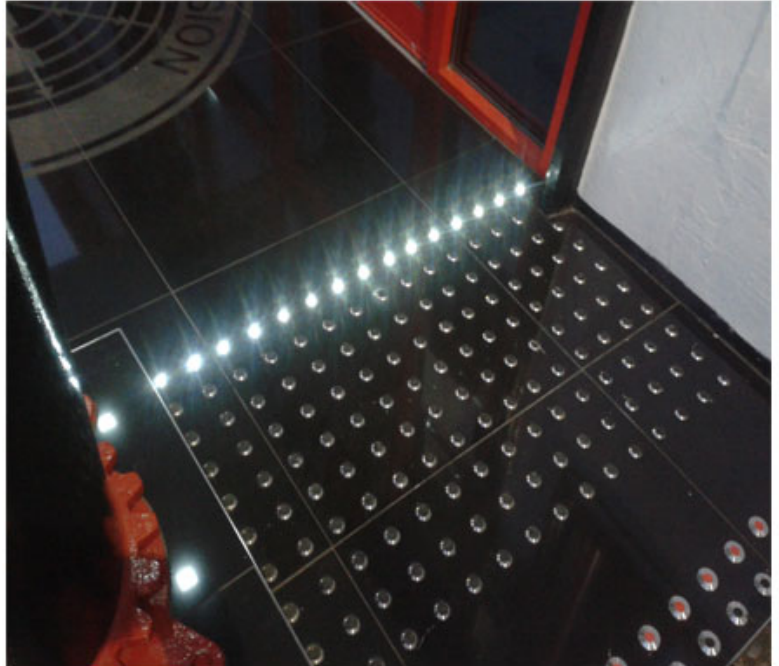
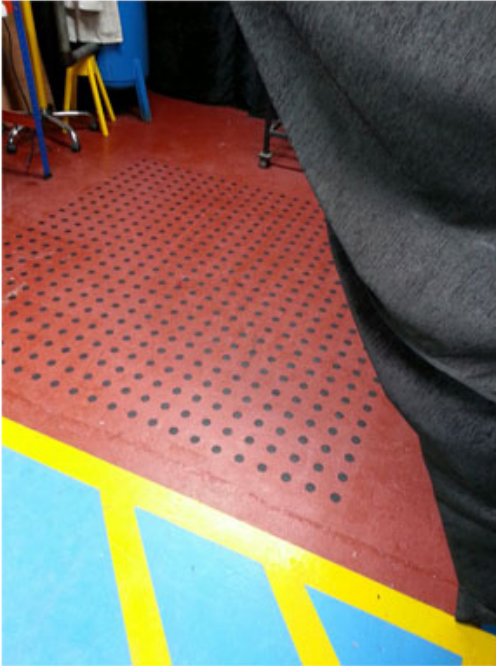
Retail – Used by stores such as M&S, Disney and Burberry



Hospitality – Used by Sheraton, Marriott, Taj & Prestige Group of Hotels



Industrial – Used at plants such as GSK and MGM Gas & Oil



Bespoke - designed to suit your requirements – Urban and Industrial

